

PEFY-M-VMA-A

CEILING CONCEALED DUCTED INDOOR UNIT

CITY MULTI

R32 

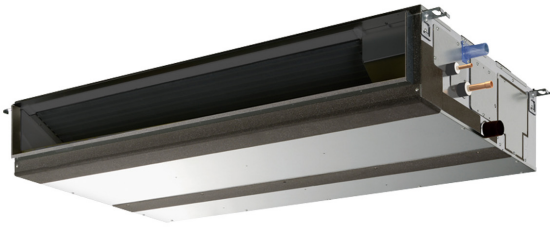
The PEFY-M-VMA-A ducted indoor unit is concealed within the ceiling space to allow unobtrusive air conditioning.

Flexibility of duct layout allows air flow patterns to be arranged to suit any application.

Key Features:

- Low height - only 250mm
- Wide range of external static pressure settings across entire range (35-150Pa)
- Low noise levels
- thanks to the use of a centrifugal fan
- Drain pump included as standard
- CN105 connector available - connect to MELCOBEMS MINI for simple BEMS interfacing





PEFY-M-VMA-A INDOOR UNITS		PEFY-M20VMA-A	PEFY-M25VMA-A	PEFY-M32VMA-A	PEFY-M40VMA-A	PEFY-M50VMA-A	PEFY-M63VMA-A	PEFY-M80VMA-A	PEFY-M100VMA-A	PEFY-M125VMA-A
CAPACITY (kW)	Heating (nominal)	2.5	3.2	4.0	5.0	6.3	8.0	10.0	12.5	16.0
	Cooling (nominal)	2.2	2.8	3.6	4.5	5.6	7.1	9.0	11.2	14.0
	UK Heating	2.5	3.2	4.0	5.0	6.3	8.0	10.0	12.5	16.0
	UK Total Cooling - Hi (Sensible)	2.00 (1.80)	2.50 (2.00)	3.20 (2.50)	4.10 (3.30)	5.00 (4.10)	6.40 (5.10)	8.10 (5.90)	10.10 (8.10)	12.60 (9.90)
	UK Total Cooling - Mi	1.94	2.42	3.07	3.94	4.80	6.11	7.78	9.67	12.07
POWER INPUT (kW)	UK Total Cooling - Lo	1.78	2.22	2.86	3.67	4.45	5.71	7.14	8.93	11.17
	Heating (nominal)	0.03	0.03	0.042	0.045	0.064	0.085	0.078	0.14	0.197
AIRFLOW (l/s)	Cooling (nominal)	0.032	0.032	0.044	0.047	0.066	0.087	0.08	0.142	0.199
	Lo-Mi-Hi	100-125-142	100-125-142	125-150-175	167-200-233	200-242-283	225-267-317	242-300-350	383-467-533	467-567-617
EXTERNAL STATIC PRESSURE (Pa)		35-50-70-100-150	35-50-70-100-150	35-50-70-100-150	35-50-70-100-150	35-50-70-100-150	35-50-70-100-150	40-50-70-100-150	40-50-70-100-150	40-50-70-100-150
SOUND PRESSURE LEVEL (dBA) ¹	Lo-Mi-Hi	21-25-27	21-25-27	23-27-30	23-28-31	24-31-34	27-31-35	25-31-34	30-35-38	34-38-40
WEIGHT (kg)		21	21	21	25	25	24	30	37	38
DIMENSIONS (mm)	Width	700	700	700	900	900	900	1100	1400	1400
	Depth	732	732	732	732	732	732	732	732	732
	Height	250	250	250	250	250	250	250	250	250
ELECTRICAL SUPPLY		220-240v, 50Hz	220-240v, 50Hz	220-240v, 50Hz	220-240v, 50Hz	220-240v, 50Hz	220-240v, 50Hz	220-240v, 50Hz	220-240v, 50Hz	220-240v, 50Hz
PHASE		Single	Single	Single	Single	Single	Single	Single	Single	Single
RUNNING CURRENT (A)	Heating / Cooling	0.25 / 0.25	0.25 / 0.25	0.34 / 0.34	0.37 / 0.37	0.51 / 0.51	0.66 / 0.66	0.57 / 0.57	0.97 / 0.97	1.23 / 1.23
FUSE RATING (BS88) - HRC (A)		6	6	6	6	6	6	6	6	6
MAINS CABLE No. Cores		3	3	3	3	3	3	3	3	3

Note: ¹ Measured in an anechoic chamber with a 1m inlet duct and 2m air outlet duct, 1.5m below unit.

PEFY-M20/25/32/40/50/63/71/80/100/125VMA-A DIMENSIONS

